

NEWSLETTER

OCTOBER 2022 EDITION



CHAPTER OFFICERS

PRESIDENT:

Ryan Koenig, CPD
rckoenig1@gmail.com

VICE PRESIDENT, TECHNICAL:

Jon Millard, PE
EXP
jonathan.millard@exp.com

VICE PRESIDENT, LEGISLATIVE:

Aaron Bock, PE,
Erdman
abock@erdman.com

VICE PRESIDENT, MEMBERSHIP:

Rich Davison
Soderholm & Associates
rdavison@soderholmrep.com

ADMINISTRATIVE SECRETARY:

Evan McSorley
Columbia Pipe
evan.mcsorley@columbiapipe.com

CORRESPONDING SECRETARY:

Amanda Schulz
Tradeline Sales
amanda@tradelinesales.com

TREASURER:

Mark Dahl
Hydro-Flo
mdahl@hydro-flo.com

AFFILIATE LIAISON:

Dan Schmidt
Badgerland Trading, Co.
dan@badgerlandtrading.com

NEWSLETTER EDITOR:

Jill Imig, PE
HGA
jimig@hga.com

ASPE YOUNG PROFESSIONALS

LIAISON:
Evan McSorley

WOMEN OF ASPE LIAISON:

Amanda Schulz

WEBMASTER:

Jon Millard



ASPE WI November Meeting

November 10, 2022 | Efficient Hot Water Design using ASSE
Valves

Caleffi, 3883 West Milwaukee Road, Milwaukee

HAPPY HOUR & PLANT TOUR: 5PM

DINNER & PRESENTATION: 6PM

COST: \$20 MEMBER

\$25 NON-MEMBER

\$5 STUDENT

**JOIN FOR YOUR
CHANCE TO WIN A \$50
KWIK TRIP GIFT CARD!**



**SIGN UP AT
ASPEWI.ORG**

FROM THE PRESIDENT'S DESK

BY: RYAN KOENIG, CPD



Good Day Wisconsin Chapter,

I'd like to take a little time to speak about our biennial crowning event, the ASPE Convention and Exposition. This year it was held in Indianapolis, Indiana. According to the press release, the event attracted nearly 4000 attendants, and was the third most attended event in ASPE's 60 year history. I'd like to thank everyone from the Wisconsin Chapter who made an appearance.

The first highlight was the Women of ASPE (WOA) Leadership Forum, where participants engaged in practicing personal branding and leadership skills while networking with peers. Participants heard from three dynamic speakers. Presenting opening remarks and speaker intros, was WOA's Committee Chair and Wisconsin's very own, Sarah Balz. Thank you Sarah for all you do for WOA and ASPE as a whole.

The next days were the business meetings and National Board elections. Wisconsin was afforded six delegates, pictured below, who acted as your representative for Bylaw changes and elections. It was a great learning opportunity and reminder that our membership is our most important resource and is where our strength resides. One benefit of being a delegate is your airfare and lodging is covered by ASPE. If you're interested in becoming a delegate at a future Convention, please speak with me or another board member.

Following the business meetings and elections, the Expo floor opened up. There were over 250 exhibitors showing off their latest and greatest products. I had the opportunity to speak with many of them. I saw quite a few packaged rainwater harvesting and storage solutions on display. There were also quite a few heat pump domestic water heaters being shown. It seems sustainability is finally getting some traction in the plumbing world. I don't want to call anyone out by name, but it was great seeing all the innovative and simplified solutions being brought to the table. Time spent on the Expo floor also affords the attendee CEUs.

Wrapping up the whole event, were one and a half days of education sessions. One would be able to attend up to five 1.25 hour sessions. The content was relevant and was presented by some of the leading voices in the plumbing industry. These sessions were also a great complement to what was being shown on the Expo floor.

If you have the opportunity, I strongly recommend attending the Convention and Expo in 2024, being held in Columbus, OH, between October 18-23. In addition to learning a lot, these events are awesome networking opportunities. I met several other designers and reps from across the country that I now consider part of my professional network, and I made closer bonds with several people I already considered friends. From new products on display, to the technical education sessions, to seeing how an organization is democratically run, there really isn't anything else like it in the industry.

LET'S GET TECHNICAL WITH VP TECH

BY: JON MILLARD, PE

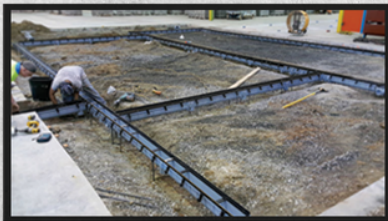


How do you eat an elephant?

In college, I spent 3 years as an intern for a well-respected tool manufacturer. One time I was feeling overwhelmed by the complexity and scale of a particular project I was working on. When I talked with my manager about this, he responded by asking the above question – “how do you eat an elephant?” The answer: one bite at a time. That is to say that no matter how big and daunting a task may seem, you can always break it down into smaller, manageable tasks that add up to a successful outcome.

This approach to tackling complex problems and projects has translated well in helping me in my design career. As plumbing engineers, we work on some very large and complex projects that can at times get overwhelming. One nice thing about the projects we work on though, is that no matter how large and complex, you can always break it down into smaller “bites”. Those bites can then be broken down into even smaller bites, and depending on the scale of the project, those smaller, individual tasks can be delegated to other team members.

When I think about breaking a large project down into smaller tasks, I think of some of these things: breaking the project down into individual system types (domestic water, sanitary & vent, storm, gas, etc). Projects can be broken down into individual areas (lower level kitchen, level 2 bathroom, rooftop bar, guest rooms on the east wing, etc). Every project is made up of lots of little tasks that all add up to make a complete project. If we can get good at identifying what these smaller tasks are, how long they should take to complete, what order it needs to be completed, and if that task can be delegated, a project can be very successful.



Dead Level Pre-sloped Trench Drain...Simple. Straight. Stable.

The Dead Level Trench Drain is uniquely designed to install and perform like no other drain system. It's pre-sloped, original design, innovative features, and durable construction combine to create a drain that delivers:

- **Simple**, fast installations, saving time & costs
- **Straight**, level runs
- **Stable**, long-term, warranted performance



Includes;

- Install Hardware
- End Caps
- Construction Covers



Have you checked out ASPE Connect yet?

It's one of ASPE's greatest member benefits!

Our online community, ASPE Connect, is an invaluable resource to help you get expert advice and new insights on your design, career advancement, and product questions. And it's available only to ASPE members!

It's like having a brainstorming session with the world plumbing community.

- Paula Leatherman, CPD, FASPE

How to Get Started

1. Visit

connect.aspe.org



2. **Sign in.** Your ASPE Connect login information is the same as your login for ASPE.org and ASPE Education. Once you are signed into one site, you are signed into all of them.



3. **Build your profile.** Help your fellow ASPE members get to know you by including a headshot, bio, education, and career history.



4. **Go to the Open Forum** and browse the discussions to add your thoughts to an ongoing conversation or start a new discussion.

Get Connected Today! connect.aspe.org

MONTHLY MEMBERSHIP UPDATES

BY: RICH DAVISON

With the holidays about to begin – now is the season to be an ASPE member! We just finished our National ASPE Expo, and it was very clear that the energy and excitement is back. Wisconsin ASPE is strong through 2022 and we are looking forward to closing out the year on a high note. Please welcome our **newest members** this month:

Jason Murkins

Looking forward to seeing you all at our in-person meetings coming up soon!

Happy Birthday fellow ASPE members!

Alexander Cowan Jr.
Eli Fitzsimons
Thomas Kruzick
Taylor Noles
Jay Oestreich
Timothy Pann P.E.
Matias Parodi
Branden Schneider P.E.
Amanda Schulz
Nicholas Shulfer
Ryan Thomas
Robert Wagner

Happy ASPE anniversary in October!

Joseph Herkowski
Thomas King
Ryan Koenig, CPD
CodyMack
Marc Rhiner
Bruce Weiss
Lev Zvenyach P.E.

INTEGRATED SYSTEMS, CONTROLS & MONITORING



COMMERCIAL
WATER TREATMENT
MADE SIMPLE



CUSTOM SOLUTIONS

- High-Purity Water (RO/DI)
- Legionella and Pathogen Control
- Contaminant Removal
- Water Reclamation
- Water Softening
- General Filtration

Over  of Engineered Water Treatment Solutions

Please visit us at watercontrolinc.com



Newsletter Advertisement

Full Page Advertisement

\$750/year, Includes:

- One (1) full page color advertisement in the ASPE WI Newsletter issued electronically on a monthly basis
- Line card posted on ASPE WI website

1/2 Page Advertisement

\$430/year, Includes:

- One (1) half page color advertisement in the ASPE WI newsletter issued electronically on a monthly basis
- Line card posted on ASPE WI website

1/4 Page Advertisement

\$230/year, Includes:

- One (1) quarter page color advertisement in the ASPE WI newsletter issued electronically on a monthly basis

Line Card on Website

\$90/year, Includes:

- Your companies line card located on the ASPE WI Website

Additional advertisements can be added at the following:

- Full page **\$697**
- 1/2 page **\$399**
- 1/4 page **\$214**
- A foursome (pre-paid) at the ASPE WI Golf Outing, including dinner for four **\$400**
- Tee Box sponsorship at the ASPE WI Golf Outing **\$100**
- Hole Event sponsorship at the ASPE WI Golf Outing **\$150**

*The term 'year' is defined from the beginning of September through August of the following year.

Contact: Jill Imig - Newsletter Editor
jimig@hga.com

Mark Dahl - Treasurer
mdahl@hydro-flo.com



Affiliate Sponsorship Program

Platinum Sponsorship

\$1620/year (a \$1800 value), Includes:

- One (1) individual Affiliate Membership
- Ten (10) meeting vouchers
- A full page advertisement in the newsletter
- Line card posted on ASPE WI Website
- A hole event sponsorship at the ASPE WI Golf Outing
- A tee box sponsorship at the ASPE WI Golf Outing
- A foursome (pre-paid) at the ASPE WI Golf Outing, including dinner for four

The following can be added to any package:

- Full page **\$697**
- 1/2 page **\$399**
- 1/4 page **\$214**
- A foursome (pre-paid) at the ASPE WI Golf Outing, including dinner for four **\$400**
- Tee Box sponsorship at the ASPE WI Golf Outing **\$100**
- Hole Event sponsorship at the ASPE WI Golf Outing **\$150**

Gold Sponsorship

\$747/year (a \$830 value), Includes:

- One (1) individual Affiliate Membership
- Five (5) meeting vouchers
- A 1/2 page advertisement in the newsletter
- Line card posted on ASPE WI website
- A tee box sponsorship at the ASPE WI Golf Outing

Silver Sponsorship

\$567/year (a \$630 value), Includes:

- One (1) individual Affiliate Membership
- Five (5) meeting vouchers
- A 1/4 page advertisement in the newsletter
- Line card posted on ASPE WI website
- A tee box sponsorship at the ASPE WI Golf Outing

*The term 'year' is defined from the beginning of September through August of the following year.

Contact: Jill Imig - Newsletter Editor
jimig@hga.com

Mark Dahl - Treasurer
mdahl@hydro-flo.com



OUR PEOPLE

**REPRESENT THE
FINEST QUALITY
COMMERCIAL AND
RESIDENTIAL PLUMBING
MANUFACTURERS**



WISCONSIN
414.771.0400
CSWI@HSArep.com

ILLINOIS
630.458.8816
CSIL@HSArep.com

HSArep.com

WE LOOK FORWARD TO WORKING WITH YOU.



Long Lengths • Lightweight • Pre-Assembled • Fast Install
6" and 12" Widths



At Herkowsky Stickler & Associates (HSA), we have proudly represented the finest commercial and residential plumbing manufactures since 1931. This includes Jay R. Smith, a provider of a comprehensive line of quality engineered plumbing and drainage products for the non-residential construction market.

HSA provides quality Jay R. Smith products, including...

- Roof, Floor, and Sanitary Drains
- Trench Drain Systems
- Water Support Closets
- Lavatory and Sink Supports
- Cleanouts and Access Doors
- Water Hammer Arresters
- Hydrants
- Backwater Valves and Traps
- Steel and Stainless Steel Interceptors

For more information or to purchase Jay R. Smith products, contact HSA today.



WISCONSIN
414.771.0400
CSWI@HSArep.com

ILLINOIS
630.458.8816
CSIL@HSArep.com

HSArep.com

WE LOOK FORWARD TO WORKING WITH YOU.

COMMERCIAL WASHROOM SOLUTIONS



If you are looking to purchase Bradley Corp. products, a timeless, unmatched range of products designed with both form and function in mind, Herkowsky Stickler & Associates (HSA) is your source for...

- Handwashing Solutions:
 - Verge™ Touch-free Matching Soaps & Faucets
 - Verge™ Wash Basins
 - OmniDecks™
 - Express® Lavatory Systems
- Safety Fixtures, including Emergency Plumbing Fixtures and Wash Fountains
- Washroom Accessories, an extensive line of accessories many with touch free activation and anti-microbial coatings:
 - Sanitizer Dispenser and Stands
 - Towel Dispensers
 - Soap Dispensers
 - Waste Receptacles
 - Mirrors
 - Aerix® Hand Dryers
 - Grab Bars
 - Shower Curtains

To purchase Bradley Corp. products or for more information, contact HSA today.



WISCONSIN
414.771.0400
CSWI@HSArep.com

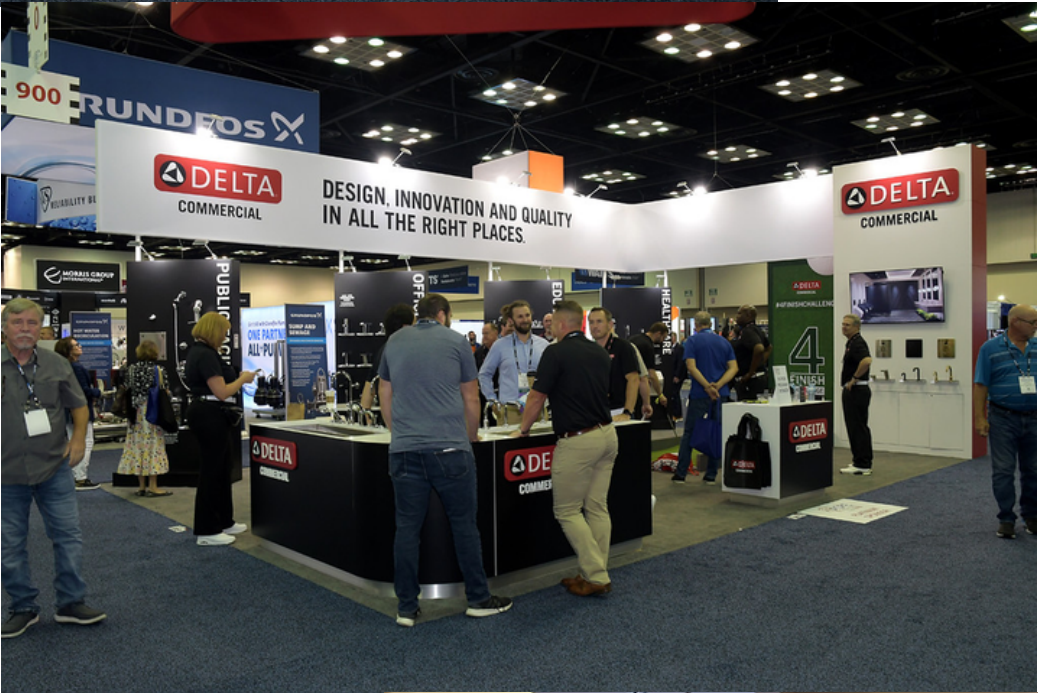
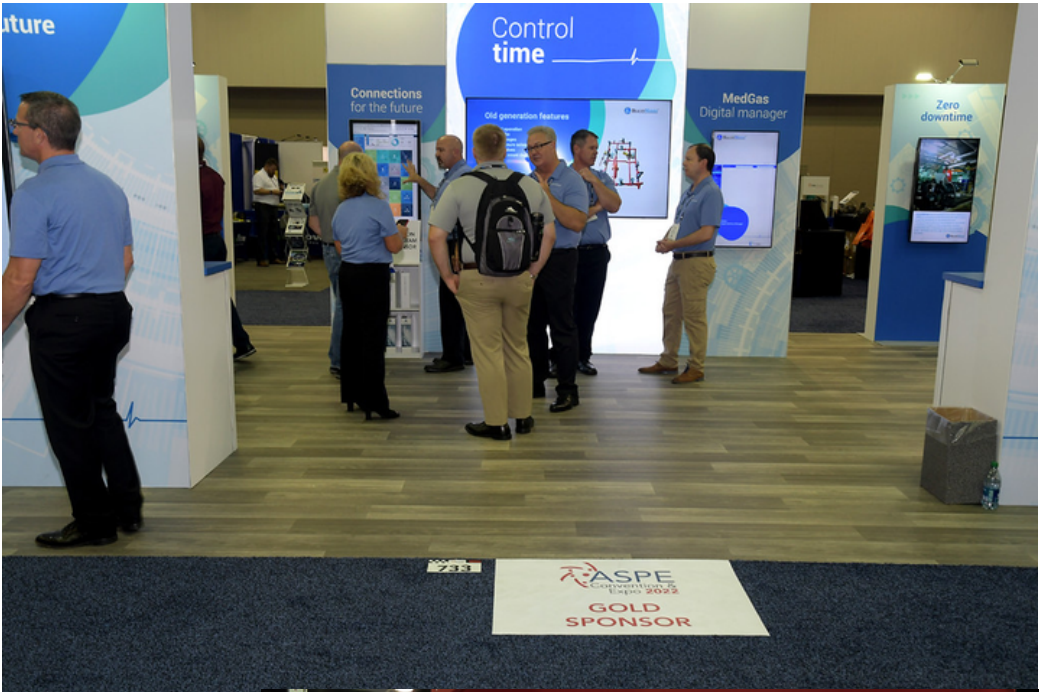
ILLINOIS
630.458.8816
CSIL@HSArep.com

HSArep.com

WE LOOK FORWARD TO WORKING WITH YOU.

CONVENTION RECAP







PVI®

A **WATTS** Brand

CONQUEST®

Fire Tube Condensing Gas Water Heater

Now up to
1,000,000 BTU

CAUTION
SIZE DOES
MATTER

199,000 to 1,000,000 BTU

100 and 130 Gallon Storage

95% to 96% Thermal Efficiency



Available With



Fully pickle-passivated and corrosion proof
in potable water regardless of temperature



QUALITY PRODUCTS

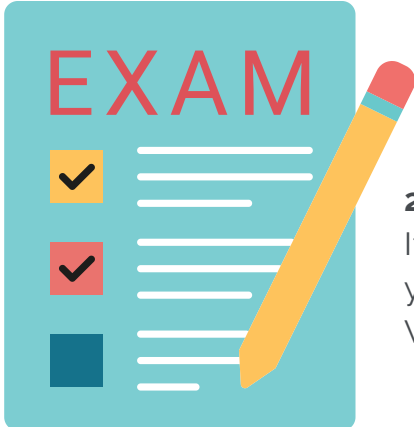
& technical support

1 - 8 0 0 - 8 4 3 - 3 5 6 9 • www.hydro-flo.com

UPDATES FROM NATIONAL



ASPE is now accepting applications for the 2023 Alfred Steele Scholarship. To be eligible, you must be an ASPE member or the spouse or child of an ASPE member, have a GPA of 3.0 or higher, and be in or plan to attend an engineering program full-time at a college, university, or technical school



2023 CPD Exam Registration Opens Next Month

If you are considering becoming Certified in Plumbing Design next year, the 2023 exam will be held via remote proctor from April 10–21. Visit ASPE's website for more information on the exam and eligibility.



Save the Date!

ASPE's popular MedGas Workshop is headed to the West Coast next year: It will be held in Irvine, California on February 23–26. Save the date if you plan to attend as registration will open soon. To discover what sets our medical gas system design training apart from other offerings in the industry, visit ASPE Pipeline.

Important Notice Regarding ASPE CEUs for Board/Committee Service

Per recent Board of Directors' guidance, ASPE's Education & Certification Department is announcing the following changes to how ASPE CEUs are issued:

1. Beginning November 1, 2022, the only committees for which CEUs will be offered to committee members are:
 - o Credentialing Committee
 - o Main Design Standards Committee
 - o Education Committee
 - o Legionella Design Guide Working Group
 - o Legislative Committee
 - o PE Working Group
 - o Technical & Research Committee

Committee members will receive 0.1 CEU for each year of service, and the credits will automatically appear in your Dashboard on ASPE Education when the two-year term is over.

2. Also beginning November 1, 2022, Chapter and ASPE Board Officers will no longer receive CEUs for serving in their position.

The changes are driven by internal review to maintain the integrity and value of the CEUs issued by ASPE.

PROBLEM



SOLUTION



Represented by



ROOFTOP SUPPORT SYSTEMS

- ✓ On-site takeoffs
- ✓ Industry-leading 20-year warranty
- ✓ Made in the U.S.A.
- ✓ Engineering available

1-800-768-6978

• WWW.MIROIND.COM •

sales@miroind.com